

Divi-Herb



DIETARY SUPPLEMENT



"This product is a nutritional supplement, is not a medicine and it does not replace a balance diet."

¿Why choose Lifehuni supplements?

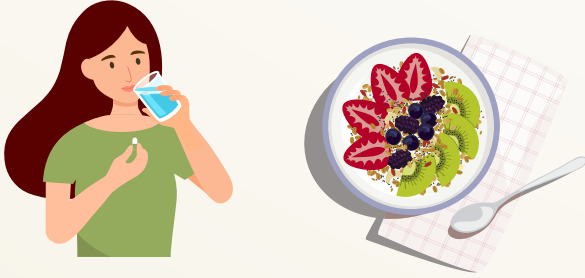
Our dietary supplements are products made up of nutrients, which are intended to supply essential elements to our organism for the performance of its functions, in most people these nutrients are poorly incorporated through the usual diet.

Presentation

Net content 60 capsules
Made in Colombia.

Suggested Use

Take three (3) capsules daily,
preferably one (1) capsule with each meal.



Recommendations

- Always follow the instructions on the product label.
- Keep in a cool, dry place.
- Keep out of reach of children.
- To maintain the freshness, keep the jar tightly closed.
- People with any special health condition should consult their doctor before taking this product.
- This product is a dietary supplement, it is not a medicine and it doesn't replace a balanced diet.

Learn more at

@Lifehuniusa



www.lifehuni.com/usa

Directions: Adults, take three (3) capsules daily, preferably one (1) capsule with each meal.

SUPPLEMENT FACTS

Serving size 3 capsules

Suggested use: for adults only.

Amount per serving	% Daily Value	
GREEN TEA (<i>Camilla sinensis</i>) Leaves	150mg	*
EGGPLANT (<i>Solanum melongena</i>) Fruit	450mg	*
KONJAC (<i>Amorphophallus konjac</i>) Tuber	120mg	*
DRY EXTRACT OF FLAXSEED	180mg	*
VITAMIN B6 (<i>Pyridoxine HCL</i>)	1.9mg	100%
VITAMIN B1 (<i>Thiamine HCL</i>)	1.5mg	100%
CHROMIUM	107.7mcg	90%

*Daily Value Not Stablished

Other Ingredients: Lactose, Creatine Monohydrate, Magnesium Stearate, Microcrystalline Cellulose.

LACTOSE EXCIPIENT CAN CAUSE HYPERSENSITIVITY



Benefits

Each portion offers Linseed, Glucomannan Tuber, Green Tea, Chromium, Eggplant, Vitamin B1 and Vitamin B6.


Lifehuni